



**PNEUMATIC PRECISION PLANTER – SVPP**

**ACCURATE**

Shaktiman pneumatic planter SVPP is an agricultural machine designed for precise and efficient seed planting. It uses air pressure to pick up seeds from a hopper and deliver them accurately into the soil at the correct spacing and depth.

Shaktiman Pneumatic planters – SVPP are known for high precision, versatility in handling various seed types, efficiency with reduced maintenance, and the ability to plant at high speeds with minimal seed damage.

Shaktiman pneumatic planter SVPP are widely used for crops like corn, soybeans, sunflowers, and cotton, as well as in specialized vegetable farming.



## REASONS TO CHOOSE SHAKTIMAN PNEUMATIC PRECISION PLANTER

- ▶ **High Precision:** Accurate seed placement with uniform spacing and consistent depth.
- ▶ **Zero Seed Loss:** Prevents missing, doubling, or damage to seeds.
- ▶ **Reduced Seed Wastage:** Maximizes seed efficiency for better crop yield.
- ▶ **Versatile Performance:** Suitable for multiple crops and various soil conditions.
- ▶ **Cost & Time Efficiency:** Reduces labor costs and enhances sowing efficiency.
- ▶ **Uniform Germination:** Promotes even plant growth for improved yields.
- ▶ **Adaptive Ground Contact:** Floating-type wheel for consistent ground engagement.

Parameters	Shaktiman Pneumatic Precision Planter (SVPP)	Mechanical Planter & Seed Drill
Multi crop suitability	✓	✗
Uniform Sowing Depth	✓	✗
Uniform plant to plant spacing	✓	✗
Seed Damage	✗	✓
Uniform fertilizer metering	✓	✗
Doubling or missing	✗	✓



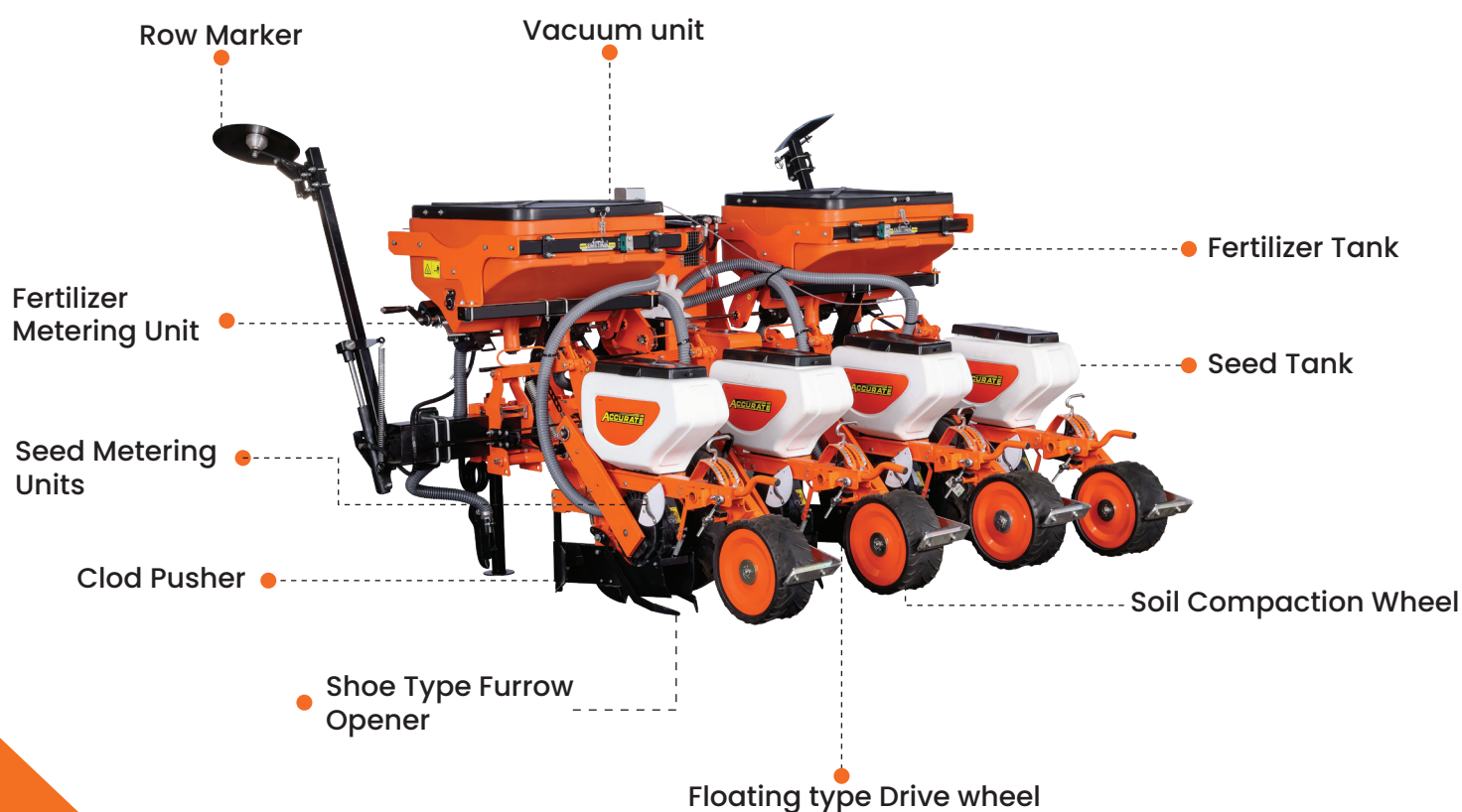
# APPLICATION

**Small Seeds :** Tur, Sesame, Pear Millet (Bajra), Sorghum (Jowar), Tomato & Rapeseed

**Medium- Large Seeds:** Cotton, Maize, Groundnut, Sun Flower, Soyabean, Gram, Caster, Green Gram, Wheat & Fennel



# KNOW THE PRODUCT



# FEATURES

## REDUCED MACHINE WEIGHT



Lighter weight simplifies transport and handling, reducing tractor strain during road travel and turns.

## LOWER SEEDER UNIT HEIGHT FOR ACCURATE SEED PLACEMENT



Lower seeder unit height keeps the seed drop point closer to the soil, so seeds enter the furrow with less bounce and roll, resulting in more accurate placement and uniform emergence.



## FULLY ASSEMBLED WITH MOVABLE PARTS

All components feature a fully movable in-machine, bolt-together design with no welding. This construction ensures easy field repairs and part replacements by farmers or technicians using standard tools.

## ROBUST FIXED / FLOATING TYPE WHEEL



The rear fixed / floating type wheel to ensure proper ground contact during the cross bund and uneven field to avoid the seed missing and improve the seed accuracy.

## V-SHAPED SOIL COMPACTOR



- Easy & quick action adjustment for planting depth control
- Cover soil on planting seed
- Press soil on seed as per scientific recommendation
- Adjust uniform depth



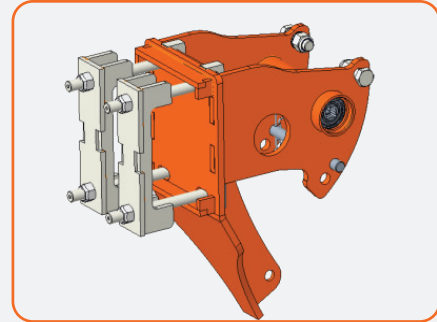
# FEATURES

## INCREASED GEARBOX HEIGHT WITH CLOSE-TYPE COVER DESIGN



Increased gearbox height with close-type cover design prevents dust entry, ensuring smoother operation and longer gearbox life.

## IMPROVED MOUNTING MECHANISM



Improved mounting of the Seeder unit and the Floating wheel with clamp bolts make the machine easier to adjust, more stable in the field, and faster to maintain for the operator.



## PLASTIC FERTILIZER TANK

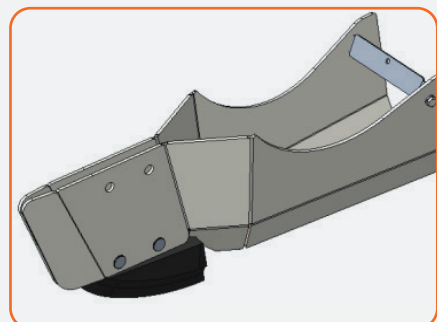
- Plastic fertilizer tank eliminates corrosion issues, reduced machine weight, and cuts maintenance cost
- Longer tank life and cleaner fertilizer, because no rust flakes or metal contamination reach the metering system or soil
- Easier handling and lower overall implement weight reduces draft and fuel consumption and simplifies mounting or removal for service

## PROVEN PARALLELOGRAM MECHANISM



For uniform plating in both even and uneven farms & easy crop management.

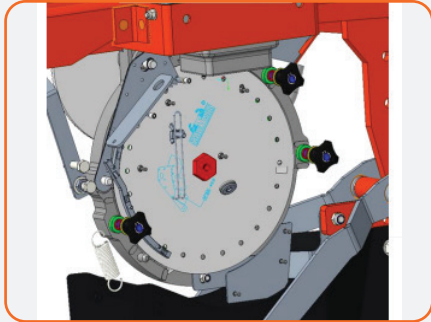
## SHOE FURROW OPENER



Shoe-type furrow opener with a narrow profile that cuts and maintains a uniform furrow for seed placement in prepared or minimum-tilled fields.

# FEATURES

## INCREASED THICKNESS OF SEED DISC

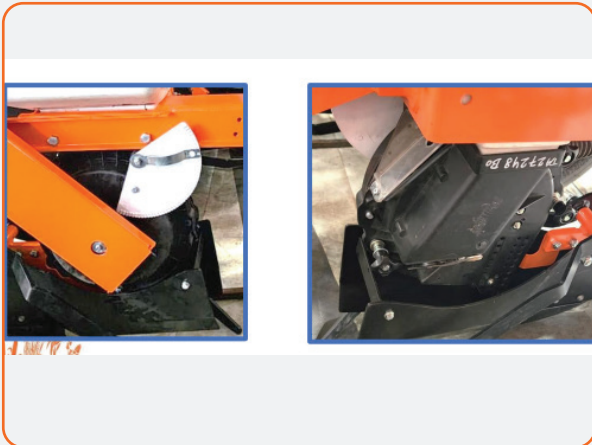


Better durability and wear resistance, so hole size/shape stays accurate for longer time

## ROW MARKER



Hydraulic actuated row marker - Trouble free & fast operation



## DOUBLE SEED ELIMINATOR

- Simple & Quick adjustment of double seed eliminator mechanism
- Glass window for check seed elimination
- Minimal wastage of seeds by twice eliminator

## SEED HOPPER



- 35L seed hopper tank capacity
- Uninterrupted seeding operation

## AUGER MECHANISM IN FERTILIZER TANK



- Auger mechanism in a fertilizer tank gives controlled, uniform and continuous feeding of material to the metering system
- Less chance of choking material
- Chain drive for Auger mechanism



# PRODUCT SPECIFICATION

Parameter	SVPP-250-4R
Working Width (cm)	300
Seed Hopper Capacity (L)	35/UNIT
Fertilization Hopper (L)	340L (Plastic) (170 Lit each Tank)
Weight of the machine (kg)	900 Kg ( Unladen)
Row spacing (min-max) (cm)	45cm to 75 cm
Frame type	Single Bar
Frame width in Transport Position (m)	2.5
Number of Seeding Units	4
Markers	With SA Hydraulic Control
Hitch	Cat-II
Overall Dimensions(mm)	
Length (mm)	2200
Width (mm)	2800
Height (mm)	1750
Power Requirement	55 HP above (with min. 2000kg Hydraulic lift capacity )
Gearbox	1 (19 ratios)
Number of Wheels	2
Drives	Chain Drive (One wheel drive to fertilizer unit, other drive to seeding unit)
Tyres	5.00X15.00 rear Floating Wheel
Metring unit	Plastic type Metering unit
Frame type	Rectangle pipe (150X100X5) (no 3 point hitch Bolted)
Seeder mounting	C-type (U-bolt clamp)
Fertilizer showing type	Shoe type
Rear wheel	Farm flex gauge wheel (compactor wheel)
Seed covering	Shoe type with Seed coverer



## **TIRTH AGRO TECHNOLOGY PRIVATE LIMITED**

**Regd. Office: "SHAKTIMAN", Unit-I, Survey No.-108/1, Plot No. B, NH-27, Nr. Bharudi Toll Plaza, Bhunava (Village), Taluka: Gondal, Dist.: Rajkot. State: Gujarat-INDIA, Pincode-360311**

**+91 (2827) 234567, +91 (2827) 270537 ☎ Fax: +91 (2827) 270457**

**✉ info@shaktimanagro.com 🌐 www.shaktimanagro.com | CIN: U72900GJ2000PTC 038435**