

# Subsoiler



(1-Tine)



(2-Tine)



(3-Tine)

**Eliminates soil compaction to improve soil structure**

**Facilitate Proper air circulation & water infiltration in land**

**Facilitate Deeper roots growth for fast plant growth & healthy plant**

**Increase Plant yield upto 50%**

SHAKTIMAN Subsoiler is a primary tractor mounted implement used to loosen, mix and break up the soil compaction at depths below the level of a traditional tillage. It's a tillage tool which improve growth & yield in all crops where soil compaction is a problem.

Most tractor mounted cultivation tools will break up and turn over surface soil to a depth of 15-30 cm while a SHAKTIMAN subsoiler can break up soil compaction and loosen the soil to almost twice those depths.

This deeper loosening can increase fissuring which improves aeration and infiltration of water, and creates a greater volume for the development of roots

SHAKTIMAN Subsoiler guarantee the elimination of soil compaction.

### Traditional VS Sub Soiling Tillage Method

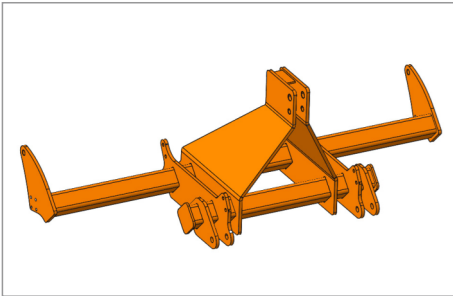
Parameters	Subsoiling Method	Traditional Tillage
Crop roots growth	High	Poor
Soil water infiltration	Excellent	Bad
Soil air circulation	Enough	Restricted
Soil Porosity	Very High	Low
Plants nutrients uptake capacity	High	Low
Yield	Enhance	Stagnant

**Breaking the Crop Yield Barrier**



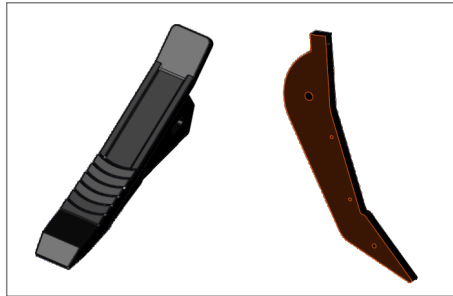
## Silent Features

### Frame made of high tensile material



- Robust & Sturdy
- Long life of implement compare to all local Subsoiler

### Blade and Tine made of Boron Steel



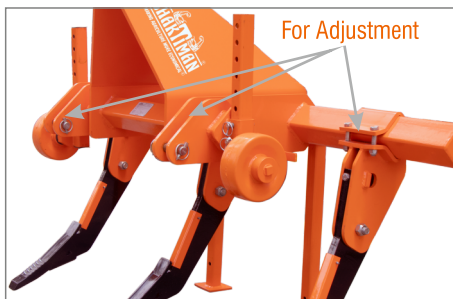
- Easily breakup hard & compacted layers
- Facilitate penetration of shank / tine
- Self sharpening of blade
- Long life & less maintenance cost
- Capable of land force absorbing

### Tine protection cover



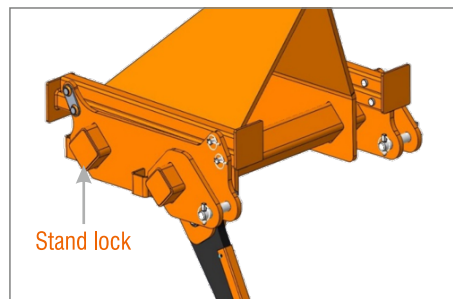
- No direct wear & tear of tine save cost
- After waring of cover just need to replace cover
- Save / Protect tine from big stones & heavy roots

### Working width adjustment



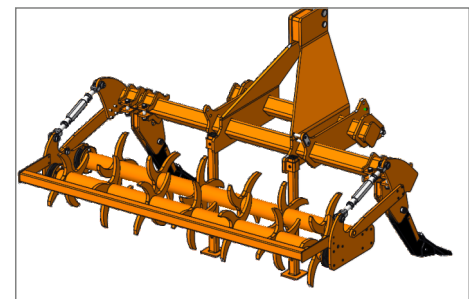
- By loosening of bolts working width can easily adjusted

### Stand locking provision



- While working on field no need to put stand on field

### Roller/Clod Cracker



- With & Without Roller option available



**"Break The Soil Compaction, Break The Crop Yield Barrier"**

\* The company reserves absolute rights to modify the specifications of machine and components therein without any prior notice. The Actual Machine can be different from the picture shown.

\* Accessories shown are not part of standard equipment.

## Technical Specification

Specification	1 Tine	2 Tine	3 Tine
Lenght (mm)	822	822	822
Width (mm)	1010	2110	2110
Height (mm)	1455	1455	1455
Weight (KG)	230	310	355
Interbody Distance (mm)	-	1000-1800	500-900
Working Depth (mm)	550	550	550
Tractor Power (HP)	45-55	55-65	70-95
Category	-	2&3	-



### Tirth Agro Technology Private Limited

"SHAKTIMAN", Survey No.-108/1, Plot No. B, NH-27, Nr. Bharudi Toll Plaza, Bhunava (Village), Taluka: Gondal, Dist.: Rajkot. State: Gujarat- INDIA, Pincode-360311

+91 (02827) 234567, 270537 +91 (02827) 270457

info@shaktimanagro.com, www.shaktimanagro.com, CIN: U72900GJ2000PTC 038435



World's Largest Manufacturer of Rotary Tiller