

SMART TECHNOLOGY  
THAT UNDERSTANDS YOU

NOW BALING IS EVEN MORE EASIER

# SHAKTIMAN SCALE LESS BALER

## SRB-45 SL & SRB-60 PLUS SL



Continuous Baling

Consistent Density

Fewer Adjustments

Reduced Labour Input

Scale-less Binding

Compact Design

Lower HP Tractor Compatible

Easy to Operate

World's Largest Manufacturer of Rotary Tiller



Missed Call No.

**91041-91037**



## Benefits: Scale Less Binding Unit



### **Continuous Baling**

Enables continuous baling without interruptions, eliminating the need to stop and manually adjust the binding mechanism

### **Consistent Density**

Ensures uniform bale density by minimizing compression variations throughout the bale

### **Reduced Labour Input**

Automatic binding eliminates the need for manual intervention, significantly reducing labor requirements during the baling operation

### **Fewer Adjustments**

Eliminates the need for manual adjustments, minimizing operator error and reducing downtime

## Scale Less Binding Unit



Bale Completion Sensor



Twine Feeding Rollers



Feeding Roller Control Box



Chain Sprocket Drive



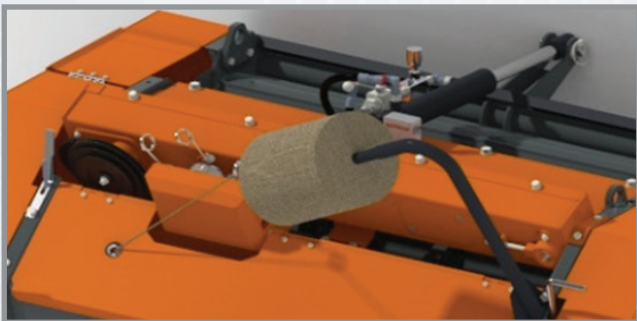
Electric Roller Motor



Sensor for Binding Completion

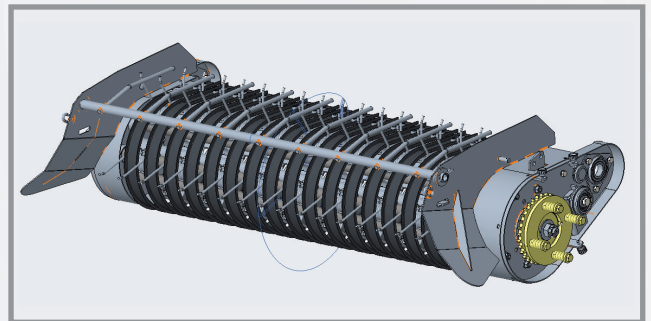
## KEY FEATURES

### Scale Less Binding Unit



- The binding unit operates without scale-dependent moving parts
- No scale mechanical movement
- Smooth operation
- Maintenance-Free Operation
- Ensures consistent bale binding performance, unaffected by strong winds during field operations

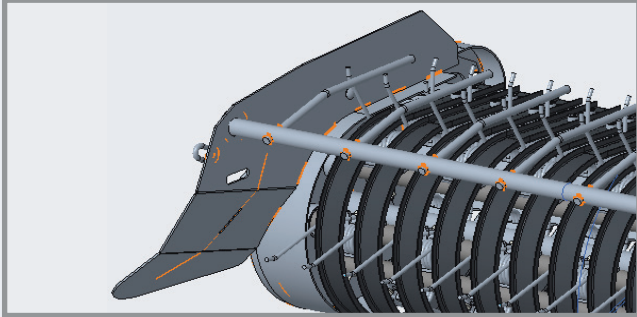
### Five Row PickUp



- Increases output of machine by 20 to 25%, compared to 4 row pickup
- Smooth operation
- Slip clutch safety system to protect from overloads of straw

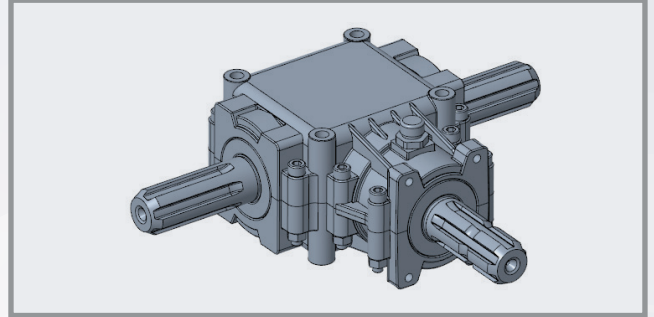
## KEY FEATURES

### Extended Side Plate



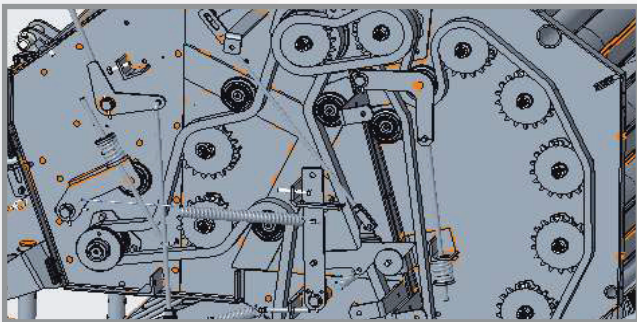
- Better collection of wider straw windrows like in TOT harvested machines

### Aluminum Gearbox



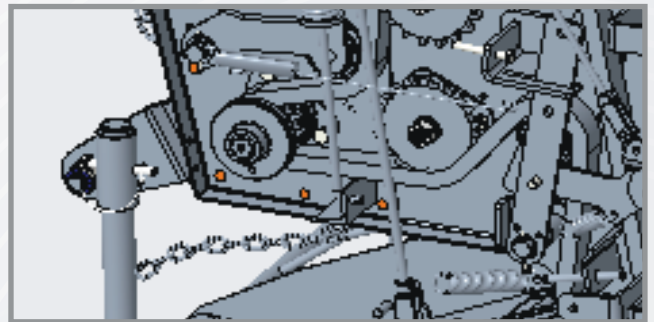
- Less weight & less heat generation
- Longer gear and seal life
- Quick fit & removal with coupling-type transmission shaft
- Easy to service

### Heavy Duty Chains



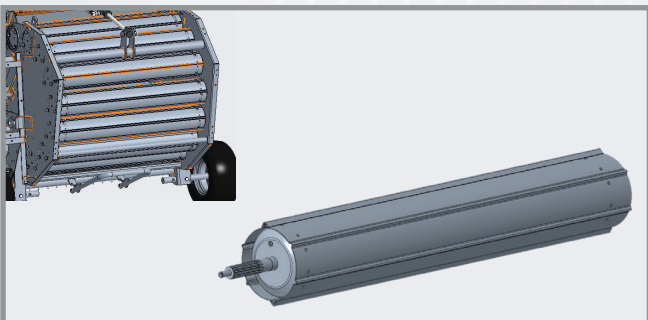
- Main drive and rear door chains are heavy duty of  $\frac{3}{4}$ " size
- Increases output of machine
- Joint links are made available through spare parts

### Shear Bolt



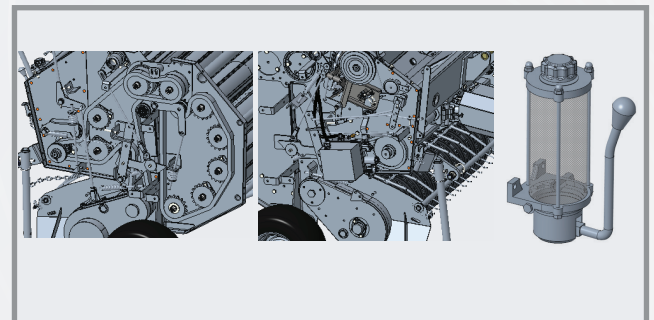
- Shear bolt safety system to protect machine from overloading
- 6mm, 10.9 grade bolt
- Available through spare parts

### Heavy Duty Roller



- Embossed profile gives longer working hours
- Light in weight
- Smooth operation, less noise
- Heavy duty bearings for longer, trouble free working

### Chain Lubrication System



- Lubrication system with manually operated oil pump
- Lubrication can be done as per requirement, ensuring longer chain life



## KEY FEATURES

### Wider Tyres with Adjustable Track



- Wider tubeless tyres (16X6.5 8PR)
- Track width adjustable as per field conditions
- Reflector light for safer movement during night time road travel

### Bale Size



Model	Bale Diameter in Inch*	Bale Width in Inch*	Weight Of bale*
SRB 60 +	24	36	17~35
SRB 45	18	41	14~30

\*Depending on crop residue being baled, moisture content and bale density setting on machine

## Technical Specification

Parameter	SRB 60 +	SRB 45
Overall Length (mm)	1335	1245 X (1686 - 1826 ) X 1240
Overall Width (mm)	Min. 1590	Min. 1686
	Max. 1660	Max. 1826
Overall Height (mm)	1230	1240
Working Width (mm)	925	1030
Ground Clearance (axle height) (mm)	180	180
Tractor Power (HP) & PTO Speed (RPM)	30 HP - 50 HP (@ 540 )	27 HP - 50 HP (@ 540 )
Hitching System	3 Point Linkage CAT II	3 Point Linkage CAT II
No. of Bars	5	5
No. of Tynes	90	90
No. of Rollers	12	10
Bale Size (mm)	Diameter - 610, Width - 915	Diameter - 460, Width - 1040
Working Capacity (Bales/hr)	55 - 60 *	60 - 65 *
Bale Weight )(kg)	17 - 35 **	14 - 30 **
Baler Weight (kg)	550	553 Approx.
Binding Twine	Jute / Polypropylene	Jute / Polypropylene
Binding Activation	<b>Scale Less Auto Binding System</b>	<b>Scale Less Auto Binding System</b>
Track Width (mm)	Adjustable track ( 1590 - 1660 )	Adjustable track ( 1515 - 1655 )
Tyre Size & Ply Rating	16 x 6.5 - 8 PR	16 x 6.5 - 8 PR
Drive Line Safety	Slip Clutch & Shear Bolt	Slip Clutch & Shear Bolt
Chamber Type	Fixed with Steel Rollers	Fixed with Steel Rollers

#### TIRTH AGRO TECHNOLOGY PRIVATE LIMITED

Regd. Office: "SHAKTIMAN", Unit-I, Survey No.-108/1, Plot No. B.NH-27, Nr. Bharudi Toll Plaza, Bhunava (Village), Taluka: Gondal, Dist.: Rajkot. State: Gujarat-INDIA, Pincode-360311

☎ +91 (2827) 234567, +91 (2827) 270537 📠 Fax: +91 (2827) 270457

✉ info@shaktimanagro.com 🌐 www.shaktimanagro.com | CIN: U72900GJ2000PTC 038435

