



HIGH CLEARANCE SLASHER MULTI SPEED



**Multi Speed
Gearbox**



**High Quality
Strong Construction
Body**



**Boron Steel Heavy
Duty Cutting Blade
(Self Sharpen)**



**Bolted Side
Plate**

- ▶ Introducing a multi-speed High Clearance Slasher with interchangeable spur gears which allows adjustment of the output speed, enabling compatibility with wider range of tractors.
- ▶ This solution enhances operational flexibility and machine efficiency across diverse tractor models.

Multi Speed Gear Box

Gearbox Oil Seal

Large Rear Opening

Skid Strip

► Oil seal is protected from dust, straw & fibrous materials

► Round type skid avoids stubble carry forward

► Replaceable depth skid

- Heavy-duty frame with a large and elevated back opening to prevent choking
- Excellent underframe clearance allows cut material to clear quickly

Blade Mounting Frame

► Robust and heavy-duty blade mounting frame

Blade

► Specially designed tapered blades for smooth cutting that minimize the load on the tractor.

Bolted Side Plate

► The side plate is of bolted type, allowing it to be opened easily for even spreading.



Heavy Duty Multi Speed Gearbox

Multi Speed-540 RPM	540		Multi speed option			
Input	Standard	With Spare				
T1	14	16	17	18	19	21
T2	21	19	18	17	16	14
Output RPM	360	455	510	572	641	810



key Features



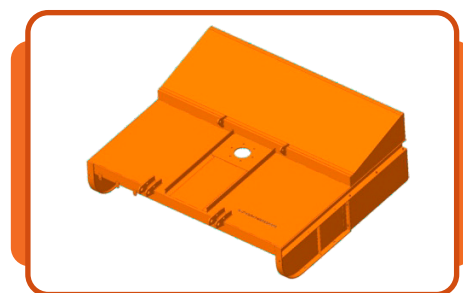
- ▶ **Heavy-Duty Multi-Speed Gearbox:**
Allows optimal speed and power adjustment for different cutting conditions, improving performance, fuel efficiency, and durability



- ▶ Self sharpening blade with hardened and tempered material EN-42J
- ▶ Robust & Heavy Duty blade mounting frame.



- ▶ Bolted round-type depth skid strip, easy to change



- ▶ Heavy-duty frame with a large, elevated back opening to prevent choking
- ▶ Excellent underframe clearance allows cut material to clear quickly.

Key Advantages

▶ **Universal Compatibility:**

Accommodates a wide range of tractors with varying PTO RPMs by simply changing the spur gear, eliminating the need for model-specific slashers.

▶ **Improved Cutting Efficiency:**

Allows optimal blade speed to match the tractor's power output, ensuring cleaner and more efficient cutting performance.

▶ **Cost-Effective Operation:**

Eliminates the need to purchase different slasher models for different tractors, reducing inventory and equipment costs.

▶ **Reduced Maintenance and Downtime:**

By running at optimal speeds, mechanical stress is minimized, which lowers the frequency and cost of repairs and maintenance.

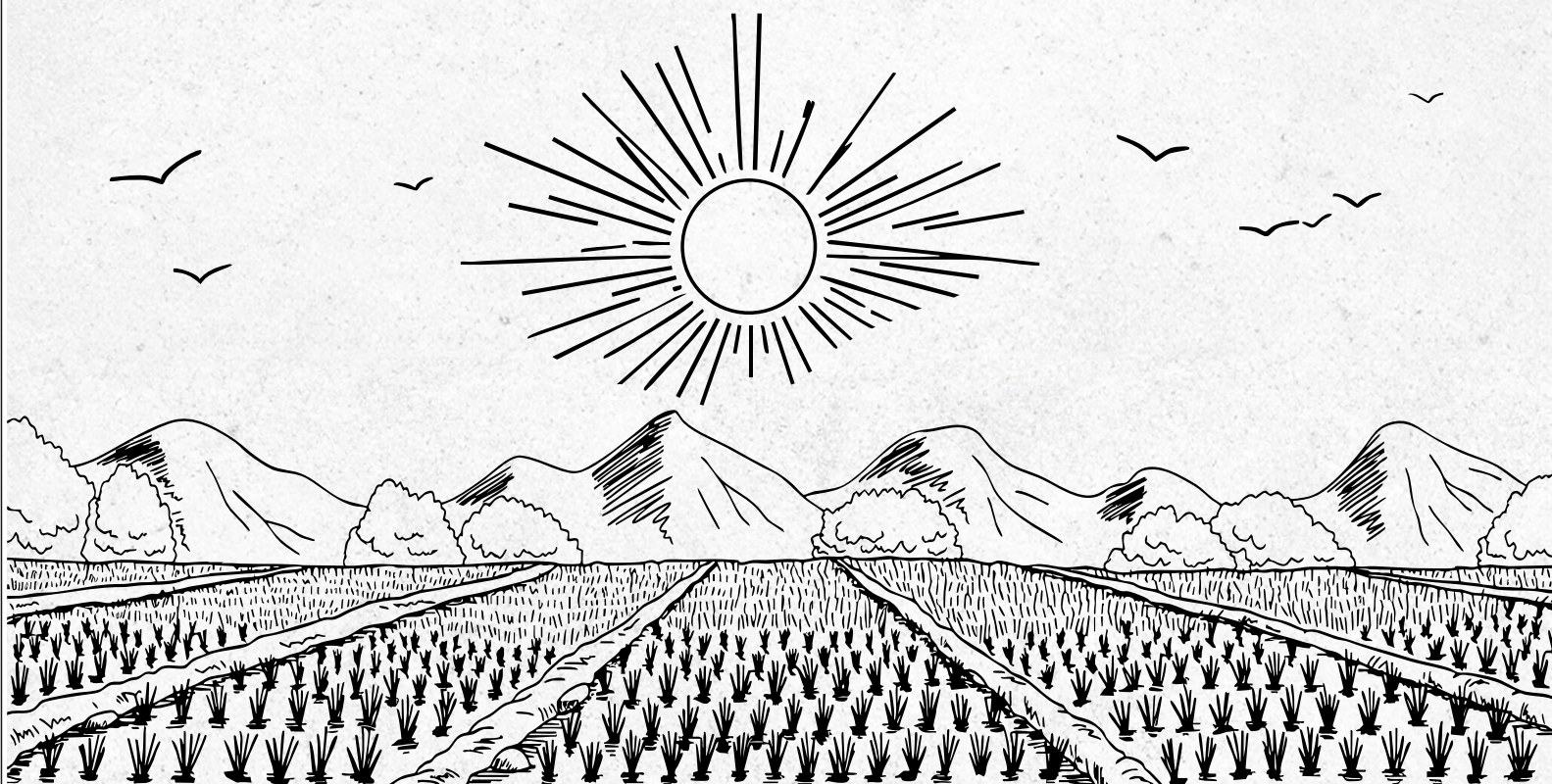
▶ **Ease of Use and Quick Adaptation:**

Spur gear changes can be performed with minimal tools and training, allowing quick adjustment in the field.



Technical Specification

Specification	SRSH 1.80-MS
Working width(mm/inch)	1702/67
Tractor Power (kW/HP)	45/33.6
No of blade	2
No of chain	-
Length (mm/inch)	1900/74.8
Width (mm/inch)	1700/66.9
Height (mm/inch)	1100/43.3
Weight(kg/lbs)	310/683.4
Cutting length (mm/inch)	33/1.30
Protection	Rubber flap
PTO RPM	540
Blade Speed (RPM)	360
Three Point Hitch	CAT-II



TIRTH AGRO TECHNOLOGY PRIVATE LIMITED

Regd. Office: "SHAKTIMAN", Unit-I, Survey No.-108/1, Plot No. B,NH-27, Nr. Bharudi Toll Plaza, Bhunava (Village), Taluka: Gondal, Dist.: Rajkot. State: Gujarat-INDIA, Pincode-360311

☎ +91 (2827) 234567, +91 (2827) 270537 ☎ Fax: +91 (2827) 270457

✉ info@shaktimanagro.com 🌐 www.shaktimanagro.com | CIN: U72900GJ2000PTC 038435



KRISHI UDAAN @ Pune